

YOLO/SOLANO AIR QUALITY  
MANAGEMENT DISTRICT

2021 Annual Report  
(For calendar year 2020 emissions)

Air Toxics “Hot Spots”  
Information & Assessment Act

November 10, 2021



**YOLO-SOLANO**  
AIR QUALITY MANAGEMENT DISTRICT

## I. INTRODUCTION

The Yolo-Solano Air Quality Management District (District) has prepared this annual report in accordance with the Air Toxics “Hot Spots” Information and Assessment Act (AB2588, 1987, Connelly).

This report will be presented at a public hearing at the November 10, 2021 Board meeting.

### BACKGROUND

The Air Toxics “Hot Spots” Information and Assessment Act (AB 2588, 1987, Connelly) was enacted in 1987, and requires stationary sources to report the types and quantities of certain substances routinely released into the air. The goal of the “Hot Spots” program was to collect emission data, to identify facilities having localized impacts, to ascertain health risks, to notify nearby residents of significant risks, and to reduce those significant risks to acceptable levels.

The District implemented this program in the 1990s and this program had not required a lot of work over the next decade. However, as detailed in the 2015 Annual report, with changes from the Office of Environmental Health Hazard Assessment (OEHHA) to the risk Guidance Manual for the Preparation of Risk Assessments, it became necessary for the District to reevaluate all of our facilities that are subject to the program.

The following are the major steps of the program:

- Identify which facilities the Act is applicable to
- These facilities must prepare an emission inventory
- The District analyzes the inventory and performs a prioritization
- High priority facilities must prepare a Health Risk Assessment (HRA)
- For high risk facilities the district must perform public notification
- Very high risk facilities must perform risk reduction

## II. FACILITIES

The Emission Inventory Criteria and Guidelines specify which facilities must be evaluated. One criterion is if a facility has criteria pollutant emissions (excluding Carbon Monoxide (CO)) over 10 tons in a year. Our District interprets this requirement to mean actual emissions, not the potential to emit (PTE). A second criterion is if a facility is in a source category identified in Appendix E.

The Guidelines specify that a facility that has been over the criteria pollutant threshold or is in a listed category can get out of the program if they make reductions or changes that are ‘permanent and enforceable’. Our District interprets that to mean that a facility can get out if they modify their Permits to Operate (PTOs) such that they reduce their PTE to less than the threshold(s).

Starting with the 2015 annual report, we used calendar year 2014 as the baseline to determine facilities with actual emissions over the 10 ton threshold. Once a facility was over the actual emissions threshold of 10 tons, they will remain in the program even if their subsequent actual emissions drop below 10 tons. For all facilities that have potential emissions over 10 tons, they are checked annually to determine if they ever have actual emissions over the threshold, at which point they will be added into the program.

The following is a summary of the number of facilities in our District to which the Act applies (once a facility is confirmed to be subject to the program, it is no longer counted in the number of ‘possible facilities’ – the possible facilities are additional facilities that may be subject in the future):

Core facility		
Qualifier	Confirmed facilities	Possible facilities
> 10 tons/year criteria pollutant	21	37

Listed Categories (Appendix E of the AB2588 Guidelines)			
SIC Code	Process Description	Confirmed facilities	Possible facilities
Any	Facilities where combustion of crude, residual, distillate, or diesel oil occurs in excess of 3,000 gallons per year total at the facility, or the facility operates any number of diesel engines for more than 20 hours per year combined total at the facility.	124	351
Any	Facilities using styrene or styrene compounds where emissions exceed 1,000 pounds per year of styrene or styrene compounds.	2	1
Any	Facilities identified by districts under section II.E.(3)(a).	11	0
723	Crop preparation services for market, if fumigation is performed using ethylene oxide, propylene oxide, or methyl bromide.	0	11
1442-1446	Construction sand and gravel mining, if asphalt products are also used or produced at the facility.	2	3
2711-2771, 2782	Printing and publishing including print shops and miscellaneous commercial printing.	2	3
2812-2899	Chemicals and allied products manufacturing.	5	10
2911-2999	Petroleum refining and related industries.	3	2
3011-3089, [3293],[3555]	Rubber and miscellaneous plastics products manufacturing, if a listed substance is used in a blowing agent, plasticizer, or diluent, or is present as free monomer.	0	2

3471-3479	Miscellaneous plating, polishing, coating, engraving, and allied services, if using hexavalent chromium, nickel, or cadmium; or thermal spraying using chromium or nickel.	1	0
4952	Wastewater treatment facilities (including publicly owned treatment works, POTWs).	2	3
4953	Refuse systems, where landfill gas emissions of vinyl chloride exceed 8.5 pounds per year.	0	3
5171-5172	Petroleum bulk stations and terminals and related wholesalers.	3	0
5511-5521, [7531], 7532, [7535]	Auto body shops (including new and used car dealers where surface coating occurs).	62	0
5541 or any	Facilities where any retail sale of gasoline occurs.	117	0
7216 or any	Dry cleaners using perchloroethylene.	0	0
7261	Funeral services with crematories.	1	0
8011-8099	Medical services, hospitals, and related facilities, if formaldehyde emissions exceed 110 pounds per year, or if sterilization occurs as described under "Any SIC" for "Facilities using ethylene oxide for sterilization", above.	0	6
Subtotal		307	395

For a detailed list of the facilities to which the Hot Spots program is applicable, see Appendix A.

### III. ANNUAL REPORT

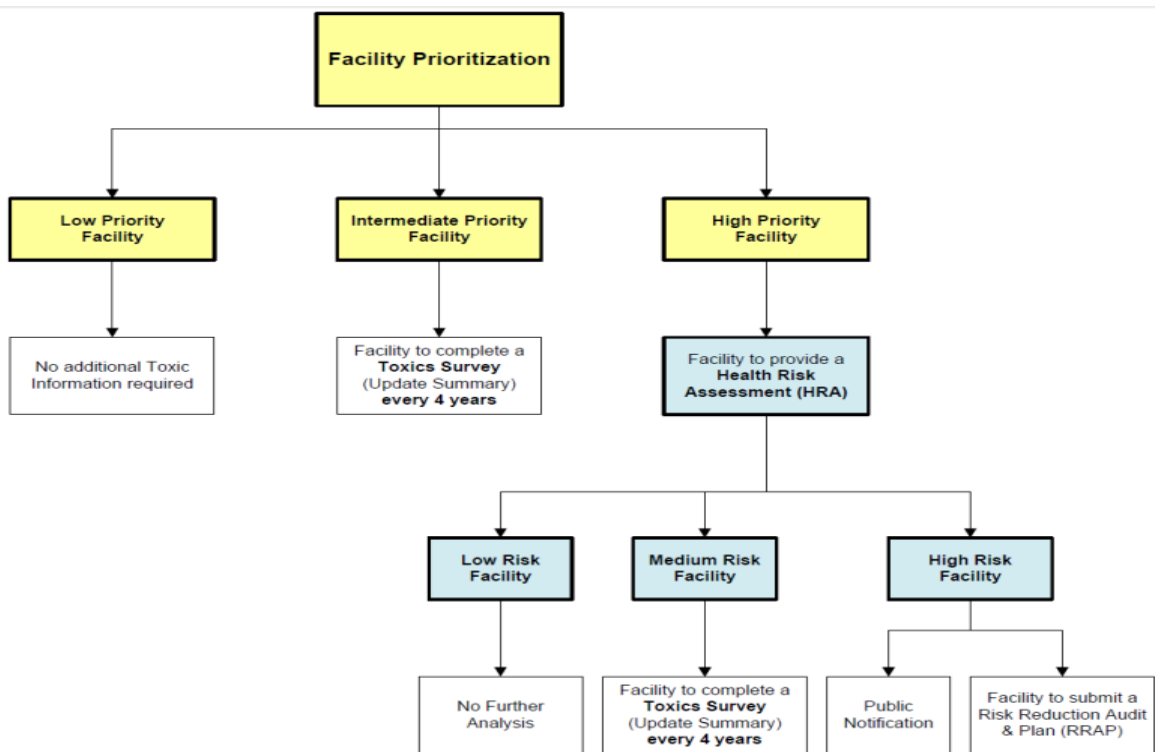
The California Health & Safety Code (CH&SC) 44363 requires that:

- (a) Commencing July 1, 1991, each district shall prepare and publish an annual report which does all of the following:
  - (1) Describes the priorities and categories designated pursuant to Section 44360 and summarizes the results and progress of the health risk assessment program undertaken pursuant to this part.
  - (2) Ranks and identifies facilities according to the degree of cancer risk posed both to individuals and to the exposed population.
  - (3) Identifies facilities which expose individuals or populations to any non-cancer health risks.
  - (4) Describes the status of the development of control measures to reduce emissions of toxic air contaminants, if any.
- (b) The district shall disseminate the annual report to county boards of supervisors, city councils, and local health officers and the district board shall hold one or more public hearings to present the report and discuss its content and significance.

This report was prepared to meet this statutory requirement.

**A. PRIORITIES AND CATEGORIES**

The “Hot Spots” Act requires air pollution control and air quality management districts (districts) to prioritize facilities to determine which facilities must perform a health risk assessment. These facilities, for purposes of risk assessment, are ranked into high, intermediate, and low priority categories. Each district is responsible for establishing the prioritization score threshold at which facilities are required to prepare a health risk assessment. In establishing priorities, the districts are to consider the potency, toxicity, quantity, and volume of hazardous materials released from the facility, the proximity of the facility to potential receptors, and any other factors that the district determines may indicate that the facility may pose a significant risk.



In order to assist the districts with this requirement, the California Air Pollution Control Officers Association (CAPCOA) Toxics and Risk Management Advisory Committee (TARMAC), in cooperation with the Office of Environmental Health Hazard Assessment (OEHHA) and the Air Resources Board (ARB), developed the Air Toxics “Hot Spots” Program, Facility Prioritization Guidelines (July 1990). In 2016 CAPCOA updated the prioritization guidance, and released a revised guidance document. The purpose of the guideline is to provide districts with suggested procedures for prioritizing facilities. However, districts may develop and use prioritization methods which differ from the CAPCOA guidelines.

Our District uses the following priorities and categories:

Unprioritized – a facility to which the Act is applicable, but for which a prioritization score hasn't yet been calculated

Low Priority – a facility with a prioritization score equal to or less than 1

Intermediate Priority – a facility with a prioritization score greater than 1 but equal to or less than 10

High Priority – a facility with a prioritization score greater than 10

In 2017, the District evaluated all permitted retail gasoline dispensing facilities (GDFs). Since those evaluations were performed, two new retail GDFs have obtained District permits, and were also evaluated. In 2018 through 2021, the District evaluated all of our facilities that operated diesel engines over 20 hours per year. In 2021, the District evaluated an additional 2 engines that had operated more than 20 hours in calendar year 2020.

Category	Facility Type	# of sources
Low Priority	GDF	42
	Diesel Engines	23
Intermediate Priority	GDF	0
	Diesel Engines	66
High Priority	GDF	0
	Diesel Engines	3

#### B. RANKING OF FACILITIES BY CANCER RISK

GDFs are considered "Industry Wide sources", so the District ran the health risk assessments for these sources. Those GDFs that were categorized as intermediate risk in 2017 were re-evaluated in 2021. A revised HRA was performed for all GDFs with emission increases of greater than 10% compared to the previous HRA.

Category	Facility Type	# of sources
Low Risk	GDF	30
Intermediate Risk	GDF	45
High Risk	GDF	0

The facilities operating diesel engines over 20 hours which are high priority facilities have been notified that a health risk assessment is required. Many of the facilities opted to have the District perform the HRA for them, however some facilities hired consultants to perform the HRA. The District has performed the HRAs and has submitted them to the OEHA comment. Once the results are finalized and approved, the District will determine which, if any, source need to do a public notice and/or risk reduction.

The facilities operating diesel engines over 20 hours which are intermediate priority facilities have been notified that they can either do a health risk assessment (to try and show that the

risk is low), or they can remain a “tracking” facility where they are in the program and perform an update every four years.

Category	Facility Type	# of sources
Low Risk	Diesel Engine	14
Intermediate Risk	Diesel Engine	16
High Risk	Diesel Engine	2

**C. RANKING OF FACILITIES BY NONCANCER RISK**

None of the GDFs have a non-cancer score over 1.

As with the cancer risk, once the high priority diesel engine facilities have performed a HRA, the non-cancer risk results will be published.

**D. DEVELOPMENT OF CONTROL MEASURES**

During calendar year 2020, the District did not develop any control measures, however staff expended resources implementing and enforcing State and Federal control measures.

**IV. STEPS TAKEN**

In the past year District staff performed the following work related to this program:

- Continued to evaluate diesel engine facilities
- Calculated 2020 actual emissions for the sources that have a potential to emit over 10 tons
- Reviewed the inventory plan from 18 core facilities
- Reviewed the emission inventory report from 15 core facilities
- Began the review process of 5 HRAs submitted by core facilities

**IV. NEXT STEPS**

In the current fiscal year (FY2021/2022), District staff plans to perform the following work related to this program:

- Finalize the prioritization of the facilities that operated diesel engine(s) over 20 hours in calendar year 2021.
- Continue working to obtain, review and approve emission inventory plans, reports, and HRAs from facilities with actual emissions over 10 tons per year
- Obtain information from the ‘possible sources’ to determine whether they are actually subject to the program

APPENDIX A  
FACILITIES TO WHICH THE “HOT SPOTS” ACT APPLIES

Facilities with actual emissions of Nitrogen Oxides (NOx), Volatile Organic Compounds (VOCs), Sulfur Oxides (SOx), or Particulate Matter less than 10 microns (PM10) over 10 tons:

ACTUAL EMISSIONS OVER 10 TONS*						
Facility ID	Company Name	Location	Pollutant	PTE	Actual	Year
01681	Northern Recycling Compost	11220 County Road 94, Zamora	VOC	1707.79	1427.61	2014
05495	Jepson Prairie Organics Compost Facility	6426 Hay Road, Vacaville	VOC	<b>70.14</b>	637.30	2014
05139	Insulfoam, a Division of Carlisle Construction Materials, LLC	1155 Business Park Drive, Dixon	VOC	<b>175.68</b>	155.21	2018
00260	Truck Accessories Group, LLC	1686 East Beamer Street, Woodland	VOC	81.79	65.00	2017
			PM10	13.73	6.65	
00257	Woodland Biomass Power, Ltd.	1786 East Kentucky Avenue, Woodland	NOx	103.36	96.89	2019
			VOC	66.09	1.99	
			SOx	49.50	6.00	
			PM10	36.75	29.74	
00025	University of California Davis	Campus Area, Davis	NOx	<b>149.10</b>	19.18	2018
			VOC	<b>28.56</b>	3.16	
			PM10	<b>23.46</b>	4.44	
05341	Recology Hay Road	6426 Hay Road, Vacaville	VOC	87.81	31.35	2019
			SOx	26.33	16.85	
00044	Conduit Infrastructure Holding IA, LLC	1601 South River Road	VOC	<b>30.29</b>	13.67	2014
			NOx	13.22	17.98	
01392	Yolo County Central Landfill	44090 County Road 28H, Woodland	VOC	74.81	31.21	2019
			NOx	57.56	21.76	
			SOx	33.79	11.86	
			PM10	16.80	9.45	
05014	Campbell Soup Supply Company, LLC	8380 Pedrick Road, Dixon	NOx	21.14	13.01	2014
05084	ALZA Corporation	700 Eubanks Drive, Vacaville	VOC	18.78	11.04	2014
01082	Granite Construction Company	15560 County Road 87, Esparto	PM10	24.59	<b>13.71</b>	<b>2020</b>
00006	Farmers Rice Cooperative	845 Kentucky Avenue, Woodland	PM10	<b>10.15</b>	10.41	2016



01656	Clark Pacific	40600 County Road 18C, Woodland	PM10	<b>48.64</b>	28.34	2019
00256	QG Printing II, LLC.	1201 Shore Street, West Sacramento	VOC	14.55	10.53	2017
			PM10	12.24	1.51	
05729	G2 Energy (Hay Road) LLC	6426 Hay Road, Vacaville	SOx	14.27	13.28	2018
			NOx	10.00	9.30	
00543	Champion Home Builders, Inc.	1720 East Beamer Street, Woodland	VOC	24.90	10.59	2019
			<b>PM10</b>	<b>11.98</b>	<b>6.93</b>	
00482	City of Davis	45400 County Road 28H, Davis	SOx	20.22	<b>11.02</b>	<b>2020</b>
01637	Mariani Nut Company	30455 Buckeye Road, Winters	PM10	<b>17.99</b>	11.41	2019
<b>02082</b>	<b>Bogle Winery Delta Facility</b>	<b>49762 Hamilton Road, Clarksburg</b>	<b>VOC</b>	<b>135.45</b>	<b>93.29</b>	<b>2020</b>
<b>00027</b>	<b>Prime Conduit, Inc.</b>	<b>1776 East Beamer Street, Woodland</b>	<b>PM10</b>	<b>21.42</b>	<b>10.44</b>	<b>2020</b>

(Entries in bold are updates/changes compared to last year's report)

\*Facility ID 00046 (Equilon Enterprises LLC) was removed from this table because the facility ceased operations and canceled their permits

Facilities with potential to emit (PTE) over 10 tons/year, which must be checked each year after we receive the throughput reports due March 31st to determine if actuals exceeded 10 tons.

POTENTIAL EMISSIONS OVER 10 TONS*						
Facility ID	Company Name	Location	Pollutant	PTE	Actual	Year
36	SSA Pacific	2895 Industrial Boulevard, West Sacramento	PM10	18.44	<b>0</b>	<b>2020</b>
05498/ 05010	California Medical Facility / California State Prison – Solano	1600 California Drive, Vacaville / 2100 Peabody Road, Building 401, Vacaville	NOx	<b>54.57</b>	<b>3.98</b>	<b>2020</b>
			VOC	<b>23.88</b>	<b>1.08</b>	
			PM10	<b>10.08</b>	<b>0.79</b>	
8	SunFoods, LLC	1620 East Kentucky Avenue, Woodland	PM10	32.26	<b>8.33</b>	<b>2020</b>
5255	City of Vacaville	6040 Vaca Station Road, Elmira	SOx	27.73	<b>5.16</b>	<b>2020</b>
			NOx	12.41	<b>1.16</b>	
2436	Yolo Hulling & Shelling LLC	29564 County Road 8, Dunnigan	PM10	<b>21.34</b>	<b>8.89</b>	<b>2020</b>
520	PGP International, Inc.	351 Hanson Way, Woodland	PM10	25.46	<b>5.54</b>	<b>2020</b>
2515	Bay State Milling Company	360 Hanson Way, Woodland	PM10	22.82	<b>6.17</b>	<b>2020</b>
5211	Basalite Concrete Products, LLC	605 Industrial Way, Dixon	PM10	21.08	<b>5.64</b>	<b>2020</b>
5286	Kaiser Health Plan	1 Quality Drive, Vacaville	NOx	18.49	<b>1.69</b>	<b>2020</b>
5293	Genentech, Inc.	1000 New Horizons Way, Vacaville	NOx	20.07	<b>3.72</b>	<b>2020</b>
			VOC	10.39	<b>7.19</b>	
			PM10	12.68	<b>7.1</b>	
509	MCI Communication	2820 KOVR Drive, West Sacramento	NOx	17.76	<b>2.8</b>	<b>2020</b>

	Services, Inc.					
5112	Ka Wai Ola	777 Elmira Road, Vacaville	VOC	17.45	<b>1.73</b>	<b>2020</b>
11	Syar Industries, Inc	16560 County Road 89, Madison	PM10	15.39	<b>0</b>	<b>2020</b>
5316	G & C Auto Body	1275 Callen Street, Vacaville	VOC	15.82	<b>0.09</b>	<b>2020</b>
5460	Molecule Corp	405 Industrial Way, Dixon	VOC	14.93	<b>0</b>	<b>2020</b>
1695	Syar Industries, Inc.	16560 County Road 89, Madison	NOx	14.92	<b>0</b>	<b>2020</b>
			SOx	10.45	<b>0</b>	
1455	Ritchie Bros. Auctioneers America Inc.	5500 County Road 99W, Dunnigan	VOC	14.9	<b>1.52</b>	<b>2020</b>
42	DePue Warehouse Co., Inc.	County Road 98 & County Road 24, Woodland	PM10	14.81	<b>0.98</b>	<b>2020</b>
5409	CalPeak Power – Vaca Dixon, LLC	5157 Quinn Road, Vacaville	NOx	14.74	<b>1.08</b>	<b>2020</b>
			PM10	11.83	<b>0.6</b>	
406	CEMEX Construction Materials Pacific, LLC	30288 State Highway 16, Madison	PM10	14.16	<b>8.59</b>	<b>2020</b>
512	Five Rivers Hulling	County Road 2 & County Road 84	PM10	13.84	<b>2.88</b>	<b>2020</b>
5582	Genentech, Inc.	2727 Fitzgerald Drive, Dixon	NOx	13.35	<b>1.64</b>	<b>2020</b>
558	PT Welding	1960 East Main Street, Woodland	VOC	13.02	<b>3.11</b>	<b>2020</b>
564	Woodland Healthcare	1325 Cottonwood Street, Woodland	NOx	13.85	<b>1.91</b>	<b>2020</b>
13	Teichert Aggregates	35030 County Road 20, Woodland	PM10	12.12	<b>2.42</b>	<b>2020</b>
461	Associated Surface Prep., Inc.	1240 Alice Street, Woodland	PM10	11.59	<b>0</b>	<b>2020</b>
5562	State Compensation Insurance Fund	1010 Vaquero Circle, Vacaville	NOx	11.49	<b>0.91</b>	<b>2020</b>
510	Mariani Nut Company	8 East Edwards Street, Winters	VOC	10.06	<b>0.01</b>	<b>2020</b>
5543	CastleLite Block LLC	8615 Robben Road, Dixon	PM10	10.06	<b>0.55</b>	<b>2020</b>
614	West Sacramento, City of	400 North Harbor Boulevard, West Sacramento	NOx	10.04	<b>0.45</b>	<b>2020</b>
861	Service King Paint & Body, LLC	1120 Shore Street, West Sacramento	VOC	10	<b>0.13</b>	<b>2020</b>
5777	ICON Aircraft, Inc.	2141 ICON Way, Vacaville	VOC	10	<b>0.01</b>	<b>2020</b>
5179	Duravent, Inc.	902 Aldridge Road, Vacaville	PM10	<b>14.58</b>	<b>1.67</b>	<b>2020</b>
2269	Dunnigan Hills Hulling & Shelling	14189 County Road 90A, Madison	PM10	10.63	<b>5.66</b>	<b>2019</b>
2520	Office of State Publishing	885 Riverside Parkway, West Sacramento	VOC	10	<b>0.6</b>	<b>2020</b>
1647	Ply Gem Pacific Windows Company	3010 Ramco Street, Suite 100, West Sacramento	PM10	<b>14.69</b>	<b>2.77</b>	<b>2020</b>
<b>548</b>	<b>Sutter Davis Hospital</b>	<b>2000 Sutter Place, Davis</b>	<b>NOx</b>	<b>11.44</b>	<b>0.89</b>	<b>2020</b>

(Entries in bold are updates/changes compared to last year's report)

## Listed Categories

Appendix E of the AB2588 Guidelines lists different ways (other than actual emissions over 10 tons per year) which a facility can be subject to the Hot Spots Act. The only data in this section that changed from previous years are the diesel engine facilities that operated more than 20 hours for the first time in 2020 and new Gasoline Dispensing Stations that began operating in 2020.

Facilities that operated diesel engines over 20 hours				
Facility ID	Company Name	Location	Hours operated	Year
<b>05145</b>	<b>Superior Packing Company</b>	<b>7390 Rio Dixon Road (Highway 113), Dixon</b>	<b>35.9</b>	<b>2020</b>
<b>05975</b>	<b>Buzz Oates Construction, Inc.</b>	<b>891 Eubanks Drive, Vacaville</b>	<b>25.5</b>	<b>2020</b>

Gasoline Dispensing Stations				
Facility ID	Company Name	Location	Hours operated	Year
<b>02403</b>	<b>Dunnigan Gas &amp; Food</b>	<b>30056 County Road 8, Dunnigan</b>		<b>2020</b>

APPENDIX B  
FACILITIES WHICH HAVE BEEN EVALUATED

## High Priority Facilities

Facility ID	Company Name	Category	Location	Prioritization
<b>01681</b>	<b>Northern Recycling Compost</b>	<b>Core</b>	<b>11220 County Road 94, Zamora</b>	<b>3,189.6</b>
00548	Sutter Davis Hospital	Diesel	2000 Sutter Place, Davis	139.02
<b>00044</b>	<b>Conduit Infrastructure Holding IA, LLC</b>	<b>Core</b>	<b>1601 South River Road, West Sacramento</b>	<b>61.92</b>
05293	Genentech, Inc.	Diesel	1000 New Horizons Way, Vacaville	23.22
<b>00256</b>	<b>QG Printing II, LLC.</b>	<b>Core</b>	<b>1201 Shore Street, West Sacramento</b>	<b>16.73</b>
<b>01656</b>	<b>Clark Pacific</b>	<b>Core</b>	<b>40600 County Road 18C, Woodland</b>	<b>12.79</b>

## Intermediate Priority Facilities

Facility ID	Company Name	Category	Location	Prioritization
<b>05084</b>	<b>ALZA Corporation</b>	<b>Core</b>	<b>700 Eubanks Drive, Vacaville</b>	<b>9.59</b>
01393	City of Davis	Diesel	201 East 14th Street, Davis	9.53
05008	Mariani Packing Company	Diesel	500 Crocker Road, Vacaville	8.87
05589	Pacific Gas and Electric Company	Diesel	4940 Allison Parkway, Vacaville	8.73
05556	Rio Vista, City of	Diesel	2703 Airport Road, Rio Vista	8.46
01236	Davis, City of	Diesel	2600 Fifth Street, Davis	8.20
05346	Dixon, City of - Fire Department	Diesel	205 Ford Way, Dixon	7.95
00008	SunFoods, LLC	Diesel	1620 East Kentucky Avenue, Woodland	7.85
<b>05911</b>	<b>Amazon.com Services, LLC-SMF5</b>	<b>Diesel</b>	<b>300 Crocker Drive, Vacaville</b>	<b>7.47</b>
05436	Buzz Oates Companies	Diesel	2041 Cessna Drive, Vacaville	7.19
00466	California Highway Patrol	Diesel	3500 Reed Avenue, West Sacramento	7.10
<b>00260</b>	<b>Truck Accessories Group, LLC Cal West Leer Factory</b>	<b>Core</b>	<b>1686 East Beamer Street, Woodland</b>	<b>6.31</b>
<b>05731</b>	<b>Wave Broadband</b>	<b>Diesel</b>	<b>Section 20, Township 8N, Range 2E (Brooks Road), Davis</b>	<b>5.88</b>
05348	1000 Vaughn Road Associates, LLC	Diesel	1000 Vaughn Road, Dixon	5.72

Facility ID	Company Name	Category	Location	Prioritization
01902	Yolo County Housing	Diesel	El Rio Villa, Winters	5.35
05286	Kaiser Health Plan	Diesel	1 Quality Drive, Vacaville	5.34
01506	IKEA US Retail LLC	Diesel	700 IKEA Court, West Sacramento	4.94
01390	West Sacramento, City of	Diesel	550 Jefferson Boulevard, West Sacramento	4.81
<b>01194</b>	<b>RLR Investments, LLC</b>	<b>Diesel</b>	<b>1820 Parkway Boulevard, West Sacramento</b>	<b>4.72</b>
05438	Marvin L. Oates Trust, et. al.	Diesel	2050 Cessna Drive, Vacaville	4.58
05483	Travis Credit Union	Diesel	One Travis Way, Vacaville	4.44
01289	Buzz Oates Development, L.P., et. al.	Diesel	3010 Ramco Street, West Sacramento	4.14
01600	Patelco Credit Union	Diesel	1460 Drew Avenue, Davis	3.98
01711	Yolo Emergency Communications Agency	Diesel	35 North Cottonwood Street, Woodland	3.94
05343	Travis AFB	Diesel	5601 Meridian Road, Vacaville	3.82
01561	Yolo County General Services Department	Diesel	137 North Cottonwood Street, Woodland	3.79
01899	Atria Senior Living	Diesel	1111 Alvarado Avenue, Davis	3.76
<b>00543</b>	<b>Champion Home Builders</b>	<b>Core</b>	<b>1720 East Beamer Street, Woodland</b>	<b>3.66</b>
<b>02435</b>	<b>Sacramento Southport, LLC</b>	<b>Diesel</b>	<b>2928 Ramco Street, West Sacramento</b>	<b>3.66</b>
02142	Judicial Council of California, 57-A10	Diesel	1000 Main Street, Woodland	3.61
01552	Sheares Logistics Assets, LLC	Diesel	2935 Ramco Street, West Sacramento	3.52
05284	Vacaville, City of	Diesel	111 South Orchard Avenue, Vacaville	3.43
05456	Thermo Fisher Scientific	Diesel	1001 Aldridge Road, Vacaville	3.31
01559	Yolo County General Services Department	Diesel	213 Third Street, Woodland	3.22
<b>01508</b>	<b>ARC FESACCA001, LLC</b>	<b>Diesel</b>	<b>4075 Channel Drive, West Sacramento</b>	<b>3.19</b>
01538	West Sacramento, City of	Diesel	1110 West Capitol Avenue, West Sacramento	3.18
<b>02465</b>	<b>BLC Industrial Venture I-CO 4, LLC</b>	<b>Diesel</b>	<b>3510 Carlin Drive, West Sacramento</b>	<b>3.17</b>
01936	True Value Company	Diesel	215 North Pioneer Avenue, Woodland	3.05
01488	Harsch Investment Properties	Diesel	910 Riverside Parkway, West Sacramento	3.00
01315	Frank C. Ramos	Diesel	3231 Evergreen Avenue, West Sacramento	2.96
01262	Arcadia Biosciences	Diesel	20212 County Road 103, Woodland	2.91

Facility ID	Company Name	Category	Location	Prioritization
02059	Davis, City of	Diesel	44085 County Road 32A, Davis	2.85
00456	Syngenta Seeds, LLC	Diesel	21435 County Road 98, Woodland	2.84
05384	Wunder-Mold Inc.	Diesel	790 Eubanks Drive, Vacaville	2.80
05732	Yolo County Housing	Diesel	31150 County Road 105, Dixon	2.56
<b>01470</b>	<b>G.I. Trucking Company</b>	<b>Diesel</b>	<b>4200 West Capitol Avenue, West Sacramento</b>	<b>2.51</b>
05537	WinCo Foods, Inc.	Diesel	855 Davis Street, Vacaville	2.46
01464	Davis, City of	Diesel	23 Russell Boulevard, Davis	2.43
<b>05888</b>	<b>Buzz Oates Construction, Inc.</b>	<b>Diesel</b>	<b>300 Crocker Drive, Vacaville</b>	<b>2.42</b>
<b>05401</b>	<b>The Home Depot</b>	<b>Diesel</b>	<b>510 Orange Drive, Vacaville</b>	<b>2.27</b>
02449	Ridge Capital, Inc.	Diesel	3600 Massie Court, West Sacramento	2.24
<b>01598</b>	<b>Perishable Shipping Services</b>	<b>Diesel</b>	<b>3057 Promenade Street, West Sacramento</b>	<b>2.07</b>
<b>01518</b>	<b>Cache Creek Casino Resort</b>	<b>Diesel</b>	<b>18935 County Road 78, Brooks</b>	<b>2.07</b>
<b>01659</b>	<b>Panattoni Development Co., LLC</b>	<b>Diesel</b>	<b>3050 Ramco Street, West Sacramento</b>	<b>2.05</b>
01273	Cummins Pacific, LLC	Diesel	875 Riverside Parkway, West Sacramento	1.88
02186	American Tower, L.P.	Diesel	23050 County Road 94, Woodland	1.70
01116	Tony's Fine Foods	Diesel	3575 Reed Avenue, West Sacramento	1.58
01614	Verizon Wireless	Diesel	54080 South River Road, Clarksburg	1.55
<b>05255</b>	<b>City of Vacaville</b>	<b>Diesel</b>	<b>6040 Vaca Station Road, Elmira</b>	<b>1.53</b>
01973	Entercom California	Diesel	42227 County Road 29, Davis	1.50
01846	Old Dominion Freight Line Inc.	Diesel	2920 Oates Street, West Sacramento	1.47
01911	Knights Landing Fire Department	Diesel	42115 Sixth Street, Knights Landing	1.41
<b>01191</b>	<b>Yolo County General Services Department</b>	<b>Diesel</b>	<b>140 Tony Diaz Drive, 2420 East Gibson Road, Woodland</b>	<b>1.34</b>
01462	Koy Builders, Inc.	Diesel	35265 Willow Avenue, Clarksburg	1.34
02149	Woodland, City of	Diesel	2001 East Street, Woodland	1.32
05505	Vacaville, City of	Diesel	1850 Alamo Drive, Vacaville	1.32
01153	Seminis Vegetable Seeds	Diesel	37437 State Highway 16, Woodland	1.26
<b>00482</b>	<b>City of Davis</b>	<b>Diesel</b>	<b>45400 County Road 28H, Davis</b>	<b>1.13</b>
01642	Verizon Wireless	Diesel	25 Matmor Road, Woodland	1.09

## Low Priority Facilities

Facility ID	Company Name	Category	Location	Prioritization
01276	Reed Ave Foodmart	GDF	705 Harbor Pointe Place, West Sacramento	0.99
00179	H&S Energy Products, LLC	GDF	901 East Street, Woodland	0.97
00120	Halal Brother	GDF	300 West Street, Woodland	0.96
01476	Harbor Truck/Auto Stop	GDF	2816 West Capitol Avenue, West Sacramento	0.95
00114	7-Eleven, Inc.	GDF	400 Mace Boulevard, Davis	0.94
02450	BLC Industrial Venture I-CO 4, LLC	Diesel	3030 Mulvany Place, West Sacramento	0.91
01663	Omni Healthcare Services, Inc.	Diesel	2215 Oakmont Way, West Sacramento	0.82
<b>05729</b>	<b>G2 Energy (Hay Road) LLC</b>	<b>Core</b>	<b>6426 Hay Road, Vacaville</b>	<b>0.79</b>
00199	Sarabjit Enterprise	GDF	1401 West Capitol Avenue, West Sacramento	0.79
<b>01082</b>	<b>Granite Construction Co.</b>	<b>Core</b>	<b>15560 County Road 87, Esparto</b>	<b>0.78</b>
00271	Berryessa Sporting Goods, LLC	GDF	115 East Grant Avenue , Winters	0.76
<b>02403</b>	<b>Dunnigan Gas &amp; Food</b>	<b>GDF</b>	<b>30056 County Road 8, Dunnigan</b>	<b>0.76</b>
<b>01240</b>	<b>LBA RVI-Company XXXIV, LLC</b>	<b>Diesel</b>	<b>3771 Channel Drive, West Sacramento</b>	<b>0.74</b>
00150	Kool Spirits-Smokes + More Corp	GDF	18430 County Road 102 , Woodland	0.68
05129	United Petroleum	GDF	1105 North First Street, Dixon	0.67
05126	7-Eleven, Inc.	GDF	2490 Nut Tree Road, Vacaville	0.66
05418	Salad Cosmo USA Corporation	Diesel	5944 Dixon Avenue West, Dixon	0.66
05373	Lowe's HIW, Inc.	Diesel	1751 East Monte Vista, Vacaville	0.64
05127	7-Eleven, Inc.	GDF	1097 East Monte Vista Avenue, Vacaville	0.64
00307	Hopefull LLC	GDF	454 North East Street, Woodland	0.58
00337	Circle A Food Store, Inc.	GDF	1506 Sacramento Avenue, West Sacramento	0.58
01119	Pacific Gas	GDF	1705 West Capitol Avenue, West Sacramento	0.57
00176	Poplar Food and Liquor	GDF	731 Poplar Avenue, West Sacramento	0.55
05838	Vacaville, City of	Diesel	111 Cogburn Circle, Vacaville	0.54
02442	Bixby SPE Finance 1, LLC	Diesel	2959 Thomas Place, West Sacramento	0.52
05058	Dixon Food & Liquor	GDF	109 North Adams Street, Dixon	0.51
00460	Kwik Stop	GDF	1001 Sacramento Avenue, West Sacramento	0.50
<b>05975</b>	<b>Buzz Oates Construction, Inc</b>	<b>Diesel</b>	<b>891 Eubanks Drive, Vacaville</b>	<b>0.49</b>
<b>05917</b>	<b>New Life Church</b>	<b>Diesel</b>	<b>5900 Cherry Glen Road, Vacaville</b>	<b>0.47</b>
00089	Parminder Singh	GDF	17776 County Road 89, Madison	0.47
00862	5 <sup>th</sup> & L Gas Mart	GDF	504 L Street, Davis	0.47
<b>02511</b>	<b>Sakata Seed America</b>	<b>Diesel</b>	<b>13459 County Road 100, Woodland</b>	<b>0.43</b>
00301	Inter-State Oil	GDF	3022 Evergreen Avenue, West Sacramento	0.43

Facility ID	Company Name	Category	Location	Prioritization
	Company			
05102	JAAP WAHEGURU, Inc.	GDF	401 Merchant Street, Vacaville	0.40
01519	Sacramento Regional County Sanitation District	Diesel	30030 South River Road, West Sacramento	0.37
00803	AT&T	Diesel	26120 County Road 6, Dunnigan	0.36
00279	AJ Hundal Mart	GDF	2434 West Capitol Avenue, West Sacramento	0.34
00313	Plug and Jug Market	GDF	9425 Locust Street, Knights Landing	0.34
05116	Inter-State Oil Company	GDF	917 Cotting Lane, Vacaville	0.34
01013	Zamora Mini Mart	GDF	9920 County Road 99W, Zamora	0.33
01904	Verizon Wireless	Diesel	4340 South River Road, West Sacramento	0.32
05453	Matheson Trigas	Diesel	871 Eubanks Drive, Vacaville	0.32
01656	Clark Pacific	Diesel	40600 County Road 18C, Woodland	0.31
05099	Dixon Valero	GDF	7864 Schroeder Road, Dixon	0.31
<b>05145</b>	<b>Superior Packing Company</b>	<b>Diesel</b>	<b>7390 Rio Dixon Road (Highway 113), Dixon</b>	<b>0.30</b>
05758	New Cingular Wireless PCS LLC	Diesel	390 Butcher Road, Vacaville	0.29
05026	Sapna Enterprises Inc.	GDF	8665 Pedrick Road, Dixon	0.28
<b>05341</b>	<b>Recology Hay Road</b>	<b>Core</b>	<b>6426 Hay Road, Vacaville</b>	<b>0.23</b>
00238	Ahuja Enterprises Inc.	GDF	615 East Street, Woodland	0.17
05240	Naval Radio Transmitter Facility	Diesel	7200 Radio Station Road, Dixon	0.16
00184	Singh Travel Center Inc.	GDF	29029 County Road 6, Dunnigan	0.15
00338	Knights Landing Grocery	GDF	9518 Locust Street, Knights Landing	0.15
05147	Solano County - Nut Tree Airport	GDF	301 County Airport Road, Vacaville	0.15
05118	Midway Foods, Inc.	GDF	4819 Midway Road, Vacaville	0.14
00168	Pisani's Service	GDF	2 Grant Avenue, Winters	0.13
05559	Asta Construction Company, Inc.	Diesel	Department of Water Resources Property (2000 feet North of Airport Road and Saint Francis Way), Rio Vista	0.08
05101	ARRM Corp	GDF	1193 East Monte Vista Avenue	0.07
05264	Delta Marina	GDF	100 Mariana Drive	0.07
05298	Dixon Liquor and Deli	GDF	483 North Adams Street	0.07
00036	SSA Pacific	Diesel	2895 Industrial Boulevard, West Sacramento	0.06
01838	Verizon Wireless	Diesel	18750 County Road 93, Woodland	0.06
00465	C.L. Smith Trucking	Diesel	37763 State Highway 16, Woodland	0.06
<b>05495</b>	<b>Jepson Prairie Organics Compost Facility</b>	<b>Core</b>	<b>6426 Hay Road, Vacaville</b>	<b>0.05</b>
00101	Sherali Gas Company	GDF	180 West Main Street	0.04



Facility ID	Company Name	Category	Location	Prioritization
00539	Sherwood Harbor Marina LLC	GDF	3505 South River Road	0.03
01854	Inter-State Oil Company	GDF	3870 Channel Drive	0.03
00317	United Travel Plaza	GDF	29770 County Road 8	0.01
05279	Snug Harbor Resorts, LLC	GDF	3356 Snug Harbor Drive	0.01
05893	Dixon Housing Authority – Fred R. Rehrman Migrant Center	Diesel	7290 Radio Station Road, Dixon	0.01

High Risk Facilities\*

Facility ID	Company Name	Category	Location	Prioritization	Cancer Risk PMI	Cancer Risk MEIR	Cancer Risk MEIW	Acute HI	Chronic HI
00509	MCI Communication Services, Inc.	Diesel	2820 KOVR Drive, West Sacramento	679.56	79.91	24.72	0.33	0.08	0.02
00564	Woodland Healthcare	Diesel	1325 Cottonwood Street, Woodland	185.49	21.38	20.72	0.46	0.05	0.01

\* For these facilities, the Health Risk Assessments have not been reviewed by OEHHA or given final approval

Intermediate Risk Facilities\*

Facility ID	Company Name	Category	Location	Prioritization	Cancer Risk PMI	Cancer Risk MEIR	Cancer Risk MEIW	Acute HI	Chronic HI
01643	Woodland Skilled Nursing Facility	Diesel	678 Third Street, Woodland	10.60	17.91	8.91	0.01	0.01	0.01
00025	University of California, Davis	Core	1 Shields Ave. Davis	N/A	7.79	7.79	0.72	0.32	0.04

Facility ID	Company Name	Category	Location	Prioritization	Cancer Risk PMI	Cancer Risk MEIR	Cancer Risk MEIW	Acute HI	Chronic HI
05209	Northbay Hospital Group VacaValley Hospital	Diesel	1000 Nut Tree Road, Vacaville	94.80	8.83	6.76	0.10	0.21	0.07
<b>05010/ 05498</b>	<b>California State Prison – Solano; California Medical Facility</b>	<b>Diesel</b>	<b>2100 Peabody Road, Building 401, Vacaville</b>	<b>292.03</b>	<b>11.9</b>	<b>6.39</b>	<b>4.47</b>	<b>0.83</b>	<b>0.00</b>
05260	Vacaville, City of	Diesel	Merchant Street, Vacaville	22.44	7.40	5.49	0.48	0.08	0.00
00481	City of Davis	Diesel	1717 5th Street, Davis	12.52	8.46	5.18	0.83	0.06	0.00
05024	Tesoro West Coast Company	GDF	199 South Orchard Avenue, Vacaville	1.81	27.60	4.23	0.40	0.43	0.11
01061	University of California, Davis	Diesel	Center for Neuroscience, Davis	15.72	14.82	4.22	0.57	0.04	0.06
01427	Winters, City of	Diesel	201 East Street, Winters	14.65	7.24	4.13	0.60	0.03	0.00
<b>01417</b>	<b>University Retirement Community at Davis</b>	<b>Diesel</b>	<b>1515 Shasta Drive, Davis</b>	<b>22.89</b>	<b>4.11</b>	<b>4.11</b>	<b>0.31</b>	<b>0.00</b>	<b>0.19</b>
00265	Andy's ARCO	GDF	313 West Main Street, Woodland	4.74	17.69	3.89	0.14	0.14	0.09
<b>05582</b>	<b>Genentech, Inc.</b>	<b>Diesel</b>	<b>2727 Fitzgerald Drive, Dixon</b>	<b>37.05</b>	<b>8.30</b>	<b>3.50</b>	<b>0.60</b>	<b>0.02</b>	<b>0.00</b>
<b>00038</b>	<b>Pacific Coast Producers</b>	<b>Diesel</b>	<b>1376 Lemen Avenue, Woodland</b>	<b>10.84</b>	<b>8.77</b>	<b>3.03</b>	<b>0.08</b>	<b>0.14</b>	<b>0.52</b>
05088	Singh Brother Oil Inc.	GDF	2500 Nut Tree Road, Vacaville	2.38	19.01	2.96	0.10	0.11	0.09
01090	Kamboj Oil Inc	GDF	45 15th Street, West Sacramento	3.49	55.40	2.68	0.17	0.23	0.27
05317	Alliance Capital Oil, LLC	GDF	2800 West A Street, Dixon	2.06	11.58	2.60	0.09	0.15	0.06
05120	Ramos Oil Company	GDF	419 Highway 12, Rio Vista	1.19	13.67	2.25	0.11	0.07	0.07
05020	TRMC Retail, LLC	GDF	800 Merchant Street, Vacaville	1.28	10.74	2.24	0.36	0.08	0.05
01652	CalSTRS	Diesel	100 Waterfront Place, West Sacramento	43.95	4.32	2.04	0.06	0.02	0.00
01925	Winters, City of	Diesel	700 Main Street, Winters	10.16	2.00	1.98	0.01	0.04	0.00
<b>01341</b>	<b>Rite Aid Corporation</b>	<b>Diesel</b>	<b>1755 East Beamer Street, Woodland</b>	<b>12.70</b>	<b>27.4</b>	<b>0.25</b>	<b>1.70</b>	<b>0.35</b>	<b>0.01</b>
<b>01392</b>	<b>Yolo County Central Landfill</b>	<b>Core</b>	<b>44090 County Road 28H, Woodland</b>	<b>95.17</b>	<b>11.47</b>	<b>1.67</b>	<b>0.37</b>	<b>0.33</b>	<b>0.05</b>
05464	Safeway Store	GDF	1200 Pitt School Road, Dixon	6.38	21.85	1.67	1.12	0.25	0.11

Facility ID	Company Name	Category	Location	Prioritization	Cancer Risk PMI	Cancer Risk MEIR	Cancer Risk MEIW	Acute HI	Chronic HI
	#1258								
01076	Sac Ziggurat LLC	Diesel	707 Third Street, West Sacramento	6.60	3.72	1.66	0.24	0.03	0.00
00148	Sams Enterprises Inc.	GDF	1935 Anderson Road, Davis	1.94	9.28	1.66	0.10	0.07	0.05
01084	Fast & Easy Mart Davis Chevron	GDF	1601 Research Park Drive, Davis	3.02	17.35	1.61	0.44	0.17	0.09
<b>01247</b>	<b>Level (3) Communications, LLC</b>	<b>Diesel</b>	<b>1075 Triangle Court, Suite 130, West Sacramento</b>	<b>38.48</b>	<b>2.98</b>	<b>1.57</b>	<b>0.07</b>	<b>0.10</b>	<b>0.00</b>
05089	BP Products North America Inc.	GDF	1470 Alamo Drive, Vacaville	1.43	6.54	1.45	0.11	0.05	0.03
<b>05344</b>	<b>Dixon Vaughn Holdings, LLC</b>	<b>Diesel</b>	<b>2299 Kids Way, Dixon</b>	<b>94.85</b>	<b>13.13</b>	<b>1.45</b>	<b>0.15</b>	<b>0.04</b>	<b>0.00</b>
00275	Circle K Stores	GDF	1930 Lake Boulevard, Davis	1.52	9.97	1.40	0.19	0.08	0.05
00181	Sangha Gasoline Inc.	GDF	5 West Main Street, Woodland	1.61	11.75	1.34	0.14	0.07	0.06
05124	Jeevan Enterprises, Inc.	GDF	199 Elmira Road, Vacaville	2.17	21.05	1.27	0.10	0.10	0.10
05465	Alamo 76, Inc.	GDF	970 Alamo Drive, Vacaville	2.37	8.77	1.22	0.35	0.08	0.04
05400	Alamo Station, LLC	GDF	1991 Alamo Drive, Vacaville	1.56	12.11	1.22	0.07	0.07	0.06
05050	H&S Energy Products, LLC #3058	GDF	501 Peabody Road, Vacaville	2.01	11.21	1.21	0.16	0.11	0.06
05095	SKSP Inc.	GDF	1300 Stratford Avenue, Dixon	1.95	13.08	1.17	0.18	0.12	0.06
00264	Century Chevron	GDF	1015 Jefferson Boulevard, West Sacramento	2.95	22.91	1.15	0.35	0.12	0.11
<b>01651</b>	<b>Costco Gasoline</b>	<b>GDF</b>	<b>2299 Bronze Star Drive, Woodland</b>	<b>9.76</b>	<b>20.08</b>	<b>0.05</b>	<b>1.14</b>	<b>0.52</b>	<b>0.10</b>
<b>05014</b>	<b>Campbell Soup Supply Company, LLC</b>	<b>Core</b>	<b>8380 Pedrick Road, Dixon</b>	<b>38.04</b>	<b>4.45</b>	<b>0.12</b>	<b>0.05</b>	<b>0.99</b>	<b>0.19</b>
<b>00257</b>	<b>Woodland Biomass Power Ltd.</b>	<b>Core</b>	<b>1786 East Kentucky Avenue, Woodland</b>	<b>655.32</b>	<b>0.67</b>	<b>0.67</b>	<b>0.28</b>	<b>0.07</b>	<b>0.64</b>
<b>05410</b>	<b>Costco Gasoline</b>	<b>GDF</b>	<b>1051 Hume Way, Vacaville</b>	<b>10.94</b>	<b>2.32</b>	<b>0.01</b>	<b>0.03</b>	<b>0.01</b>	<b>0.51</b>
00272	Pilot Corporation	GDF	30035 County Road 8, Dunnigan	15.69	33.60	0.99	0.31	0.45	0.16
<b>02396</b>	<b>Takhar West Sac</b>	<b>GDF</b>	<b>2270 Lake Washington</b>	<b>4.51</b>	<b>25.36</b>	<b>0.35</b>	<b>0.13</b>	<b>0.20</b>	<b>0.12</b>

Facility ID	Company Name	Category	Location	Prioritization	Cancer Risk PMI	Cancer Risk MEIR	Cancer Risk MEIW	Acute HI	Chronic HI
	<b>Inc</b>		<b>Boulevard, West Sacramento</b>						
05107	Tesoro West Coast Company	GDF	177 Peabody Road, Vacaville	2.67	36.47	0.96	0.78	0.12	0.18
00136	Norman O. Williams, Inc	GDF	208 Main Street, Woodland	1.38	21.08	0.94	0.25	0.09	0.10
00303	Quik Stop Markets, Inc.	GDF	1400 East Main Street, Woodland	2.20	34.64	0.17	0.90	0.14	0.17
05087	Vacaville Petroleum LLC	GDF	310 Orange Drive, Vacaville	3.34	24.22	0.19	0.84	0.11	0.12
05509	Quik Stop Markets, Inc.	GDF	1091 Leisure Town Road, Vacaville	3.62	16.42	0.84	0.05	0.14	0.08
05065	H&S Energy Products, LLC #3052	GDF	1491 East Monte Vista Avenue, Vacaville	2.14	11.20	0.02	0.80	0.10	0.01
00294	Darshan S Mundy	GDF	4810 Chiles Road, Davis	2.12	27.28	0.74	0.29	0.12	0.13
00110	Robert's Mini Mart	GDF	450 County Road 102, Woodland	5.19	31.30	0.11	0.60	0.26	0.12
05100	Maxx for Less Inc.	GDF	1009 Highway 12, Rio Vista	2.17	39.55	0.46	0.23	0.18	0.19
01399	Tramnuss Inc.	GDF	333 Mace Boulevard, Davis	4.37	18.69	0.43	0.08	0.13	0.09
05588	Sam's West, Inc.	GDF	1500 Helen Power Drive, Vacaville	5.31	16.06	0.22	0.35	0.22	0.08
00284	West Sac Truck Stop	GDF	4790 West Capitol Avenue, West Sacramento	3.01	22.42	0.21	0.33	0.15	0.11
00267	P&D Properties, LLC	GDF	847 Harbor Boulevard, West Sacramento	4.14	21.54	0.05	0.30	0.26	0.10
01037	Mass Enterprises, Inc.	GDF	2002 Lyndell Terrace, Davis	1.75	10.36	0.30	0.07	0.13	0.05
05106	7-Eleven, Inc.	GDF	1405 Ary Lane, Dixon	2.40	11.02	0.27	0.27	0.13	0.05
01909	Charanjit Ghai	GDF	701 Matsumoto Lane, Suite 2, Winters	3.22	10.01	0.13	0.19	0.22	0.05
00308	Woodland Chevron	GDF	1592 East Main Street, Woodland	3.18	21.04	0.09	0.19	0.12	0.10
00266	BP Products North America Inc.	GDF	805 Reed Avenue, West Sacramento	3.69	9.57	0.07	0.18	0.10	0.05
01676	Takhar Properties	GDF	16435 County Road 99, Woodland	3.35	20.94	0.15	0.09	0.18	0.10
00141	Chevron Products	GDF	4800 West Capitol Avenue, West Sacramento	2.37	7.22	0.12	0.12	0.10	0.03

Facility ID	Company Name	Category	Location	Prioritization	Cancer Risk PMI	Cancer Risk MEIR	Cancer Risk MEIW	Acute HI	Chronic HI
	Company								
01317	Micnan, LLC	GDF	800 IKEA Court, West Sacramento	2.10	7.21	0.06	0.11	0.15	0.04
05517	Gill Sidhu Enterprise	GDF	6854 Sievers Road, Dixon	1.91	8.62	0.11	0.10	0.12	0.04
05039	Salkhi Petroleum Inc	GDF	1501 East Monte Vista Avenue, Vacaville	2.23	26.91	0.02	0.07	0.15	0.13

\* For these facilities, the Health Risk Assessments have not been reviewed by OEHHA or given final approval

#### Low Risk Facilities\*

Facility ID	Company Name	Category	Location	Prioritization	Cancer Risk PMI	Cancer Risk MEIR	Cancer Risk MEIW	Acute HI	Chronic HI
01239	IDEXX Distribution, Inc.	Diesel	2825 KOVR Drive, West Sacramento	12.81	10.96	0.25	0.89	0.02	0.00
01356	James Carlsen	Diesel	3885 Seaport Boulevard, West Sacramento	20.69	10.20	0.38	0.85	0.01	0.00
05291	Ishaq Trading Corporation	GDF	901 Mason Street, Vacaville	1.64	9.64	0.70	0.05	0.06	0.05
05885	700 Crocker Owner, LLC	Diesel	700 Crocker Drive, Vacaville	22.31	4.60	0.67	0.38	0.03	0.01
00305	Quik Stop Markets, Inc.	GDF	10 Kentucky Avenue, Woodland	2.52	14.10	0.66	0.11	0.03	0.07
05258	Vacaville, City of	Diesel	1001 Allison Drive, Vacaville	14.81	2.61	0.61	0.21	0.03	0.00
01816	Hunter Douglas	Diesel	2080 Enterprise Boulevard, West Sacramento	12.12	7.03	0.03	0.58	0.02	0.00
01562	Harsch Investment Properties	Diesel	1590 Raley Court, West Sacramento	20.69	13.08	0.14	0.55	0.03	0.00
05399	H&S Energy Products, LLC #3055	GDF	900 Mason Street, Vacaville	2.17	6.28	0.55	0.20	0.07	0.03
00055	Inter-State Oil	GDF	183 West Main Street, Woodland	1.56	14.10	0.54	0.13	0.06	0.06

Facility ID	Company Name	Category	Location	Prioritization	Cancer Risk PMI	Cancer Risk MEIR	Cancer Risk MEIW	Acute HI	Chronic HI
	Company								
05047	IJK Oil Inc.	GDF	970 Merchant Street, Vacaville	1.41	16.04	0.45	0.18	0.06	0.08
05748	Sidhu & Sons	GDF	151 Crocker Drive, Vacaville	2.72	10.16	0.14	0.40	0.09	0.05
02587	RADC Enterprises, Inc.	GDF	1885 East Gibson Road, Woodland	1.95	6.29	0.36	0.20	0.05	0.03
00614	West Sacramento, City of	Diesel	400 North Harbor Boulevard, West Sacramento	11.06	2.01	0.35	0.17	0.09	0.00
05092	Salkhi Petroleum Inc.	GDF	300 Highway 12, Rio Vista	1.30	8.50	0.33	0.08	0.06	0.04
00063	Sahota Enterprises Inc.	GDF	3 Main Street, Woodland	1.03	20.30	0.32	0.11	0.09	0.08
01133	McKesson Corp	Diesel	3775 Seaport Boulevard, West Sacramento	38.87	3.73	0.26	0.20	0.04	0.00
00138	AASIM Corporation	GDF	999 East Grant Avenue, Winters	2.53	17.32	0.25	0.15	0.05	0.09
05334	Salkhi Petroleum Inc.	GDF	541 Davis Street, Vacaville	2.03	18.04	0.22	0.23	0.09	0.09
05409	CalPeak Power - Vaca Dixon, LLC	Diesel	5157 Quinn Road, Vacaville	6.90	2.80	0.02	0.23	0.03	0.00
05350	Pritam Sidhu - ARCO AM/PM	GDF	2599 North First Street, Dixon	1.83	10.46	<b>0.23</b>	0.05	0.07	0.05
05131	GAWFCO Enterprises, Inc.	GDF	2000 Nut Tree Road, Vacaville	1.11	5.46	<b>0.22</b>	0.09	0.05	0.03
05331	Dorset Valero	GDF	170 Dorset Drive, Dixon	1.52	10.00	<b>0.22</b>	0.04	0.07	0.05
05562	State Compensation Insurance Fund	Diesel	1010 Vaquero Circle, Vacaville	12.19	1.49	0.21	0.12	0.07	0.00
02129	Andy's BP, Inc.	GDF	4480 Chiles Road, Davis	1.24	5.15	0.21	0.10	0.05	0.03
05385	Edward R. Marszal Enterprises, Inc.	GDF	182 Nut Tree Parkway, Vacaville	2.01	14.05	0.04	0.20	0.08	0.07
00137	Tera Investments, Inc.	GDF	4475 Chiles Road, Davis	2.38	6.13	0.17	0.05	0.08	0.03
01120	H&S Energy Products, LLC #3041	GDF	3180 Jefferson Boulevard, West Sacramento	2.18	6.07	0.17	0.12	0.05	0.03
02130	Saladino's, Inc.	Diesel	3045 Mulvany Place, West Sacramento	14.36	0.89	0.14	0.07	0.03	0.00
05036	Leisure Town 76	GDF	817 Leisure Town Road, Vacaville	1.81	4.52	0.11	0.04	0.08	0.02
01088	Sahota	GDF	2020 East Main Street, Woodland	1.58	5.59	0.02	0.10	0.04	0.03

Facility ID	Company Name	Category	Location	Prioritization	Cancer Risk PMI	Cancer Risk MEIR	Cancer Risk MEIW	Acute HI	Chronic HI
	Enterprises Inc.								
05213	G S Texaco	GDF	2615 Plaza Court, Dixon	1.16	3.76	0.10	0.04	0.05	0.03
00130	Woodland Chevron.	GDF	596 North East Street, Woodland	1.07	17.72	0.01	0.09	0.09	0.09
01136	Evergreen Ave 76	GDF	2811 Evergreen Avenue, West Sacramento	1.29	4.67	0.02	0.07	0.05	0.02
01074	Sacramento/Dunnigan Property Inc.	GDF	4040 County Road 89, Dunnigan	1.25	5.79	0.05	0.06	0.08	0.03
05144	Chevron Products Company	GDF	299 Orange Drive, Vacaville	2.05	8.93	0.05	0.04	0.06	0.01
01023	Target Corporation	Diesel	2050 East Beamer Street, Woodland	22.43	2.52	0.03	0.20	0.02	0.00
00310	7-Eleven, Inc.	GDF	4010 Lake Road, West Sacramento	1.16	5.60	0.01	0.04	0.07	0.03
00858	Woodland, City of	Diesel	2395 East Main Street, Woodland	15.49	16.89	0.02	0.04	0.06	0.01
<b>01267</b>	<b>T-Mobile</b>	<b>Diesel</b>	<b>840 Riverside Parkway, West Sacramento</b>	<b>66.45</b>	<b>3.15</b>	<b>0.06</b>	<b>0.76</b>	<b>0.03</b>	<b>0.00</b>
<b>00113</b>	<b>Paul &amp; Paul, Inc.</b>	<b>GDF</b>	<b>705 Russell Boulevard, Davis</b>	<b>3.34</b>	<b>3.91</b>	<b>0.52</b>	<b>0.10</b>	<b>0.06</b>	<b>0.02</b>
00129	AU Energy, LLC dba Olive Drive Shell	GDF	1010 Olive Drive, Davis	1.95	6.65	0.67	0.13	0.08	0.03
00124	AU Energy, LLC dba Andersen Davis Shell	GDF	1944 Anderson Road, Davis	1.36	5.03	0.41	0.03	0.09	0.02
05041	AU Energy, LLC	GDF	950 Merchant Street, Vacaville	1.25	2.47	0.24	0.11	0.07	0.02

\* For these facilities, the Health Risk Assessments have not been reviewed by OEHHA or given final approval