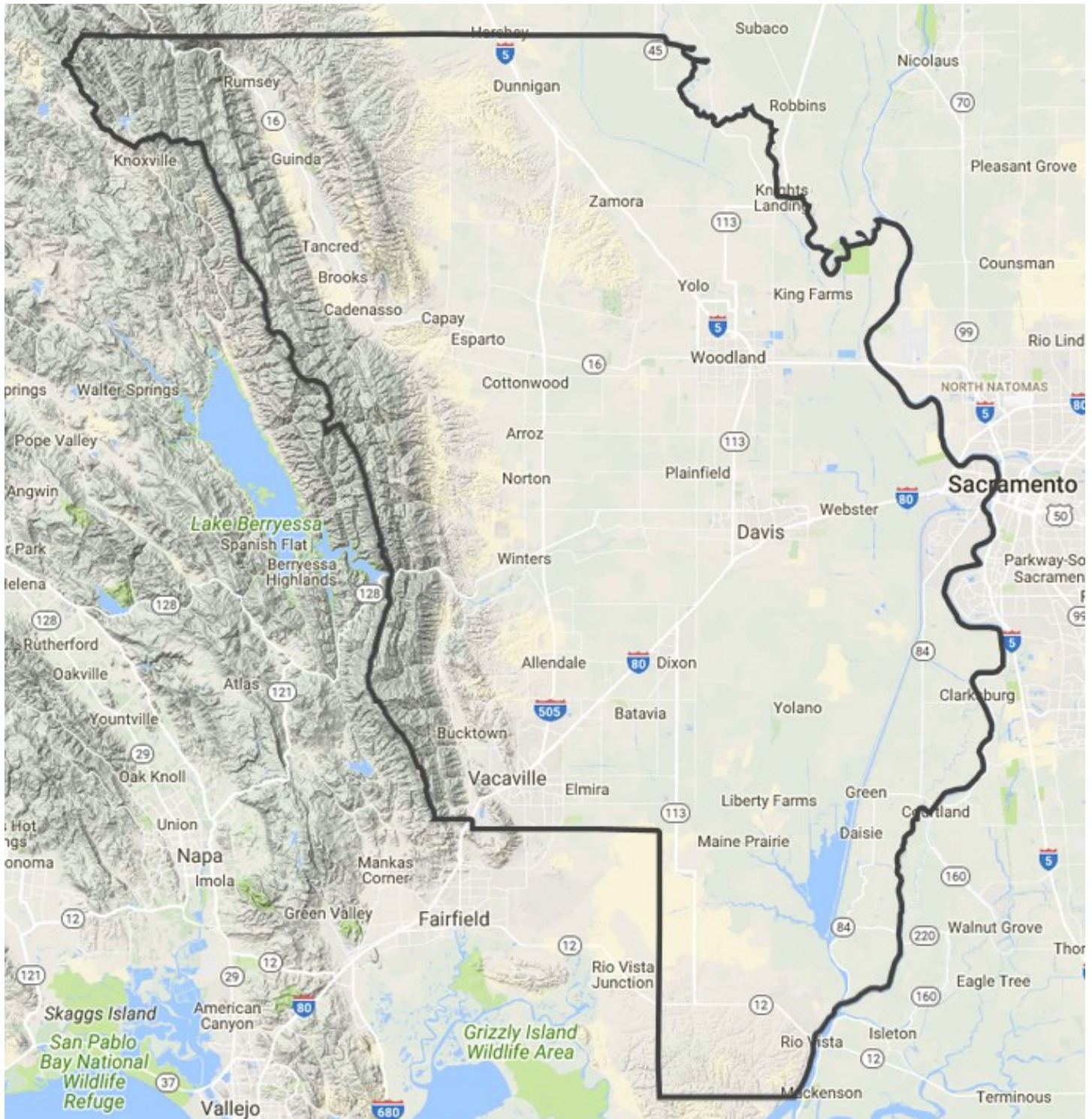


MAP OF THE YOLO-SOLANO AQMD



The following incorporated areas are in the Yolo-Solano AQMD: All of Yolo County (Davis, West Sacramento, Winters & Woodland) and the northeastern portion of Solano County (Dixon, Rio Vista & Vacaville). The Solano boundary extends from I-80 eastward along the southern boundary of the California Medical Facility, which corresponds to Hay Road. The boundary extends to the south along Goose Haven Road towards the vicinity of Birds Landing and Montezuma Hills Road and then easterly 3/4 of a mile south of Montezuma Hills Road to the intersection of the Sacramento River.

If you have questions about other locations in our jurisdiction, please contact the District office at: (530) 757-3650.